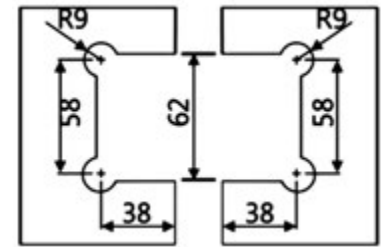
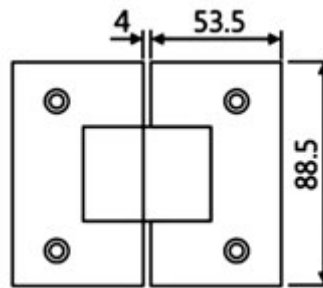


Glass cut-out top and bottom

Features:

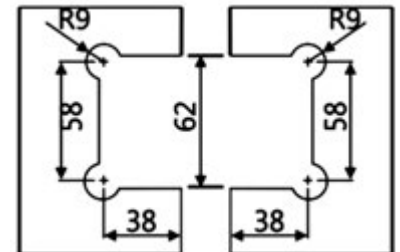
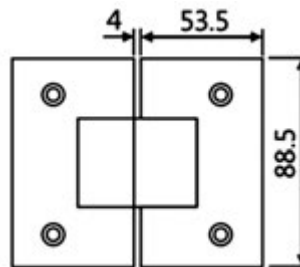
- Door width should not exceed 800 mm.
- Door weight should not exceed 45 Kg.
- Suitable Glass thickness 8mm / 10mm.
- Material :- SS - 304.
- Finish :- PSS/SSS

SHOWER FITTINGS - SHOWER HINGE - S.S. 304


Glass cut-out top and bottom

Features:

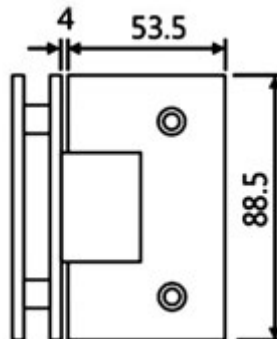
- Door width should not exceed 800 mm.
- Door weight should not exceed 45 Kg.
- Suitable Glass thickness 8mm / 10mm.
- Material :- SS - 304.
- Finish :- PSS/SSS

NSH - 202 Glass to Glass Hinge 180°


Glass cut-out top and bottom

Features:

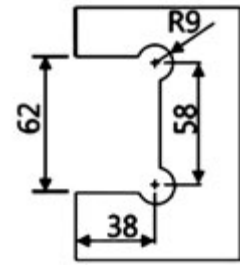
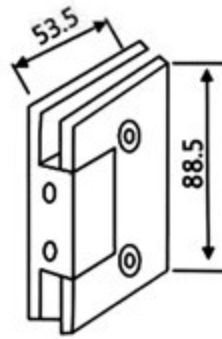
- Door width should not exceed 800 mm.
- Door weight should not exceed 45 Kg.
- Suitable Glass thickness 8mm / 10mm.
- Material :- SS - 304.
- Finish :- PSS/SSS

NSH - 203 Glass to Glass Hinge 135°

Features:

- Door width should not exceed 800 mm.
- Door weight should not exceed 45 Kg.
- Suitable Glass thickness 8mm / 10mm.
- Material :- SS - 304.
- Finish :- PSS/SSS

NSH - 204 Glass to Glass Hinge 90°

SHOWER FITTINGS - SHOWER HINGE - S.S. 304

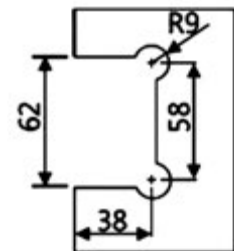
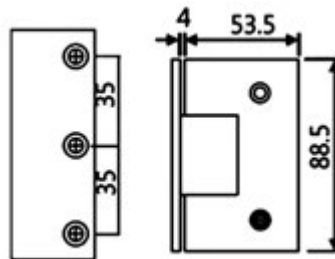


Glass cut-out top and bottom

Features:

- Suitable Glass thickness 8mm / 10mm.
- Material :- SS - 304.
- Finish :- PSS/SSS

NSH - 205 Fixed Hinge

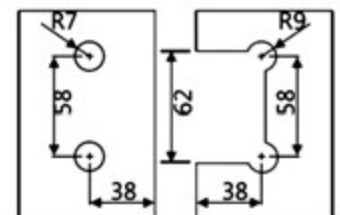
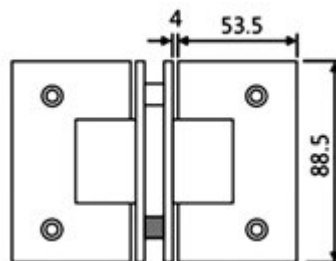


Glass cut-out top and bottom

Features:

- Door width should not exceed 800 mm.
- Door weight should not exceed 45 Kg.
- Suitable Glass thickness 8mm / 10mm.
- Material :- SS - 304.
- Finish :- PSS/SSS

NSH - 206 Wall to Glass Hinge - One Side



Glass cut-out top and bottom

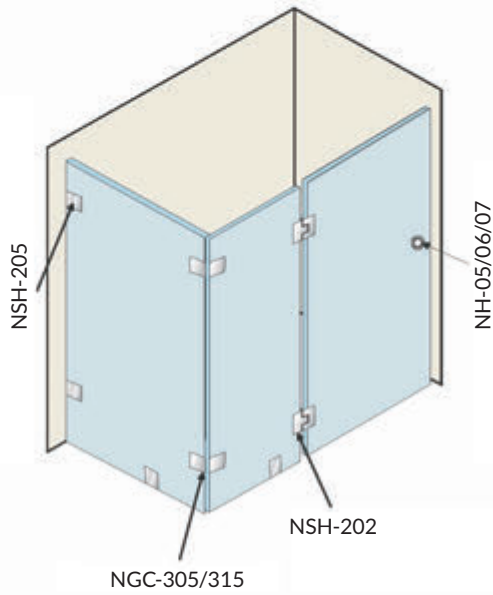
Features:

- Door width should not exceed 800 mm.
- Door weight should not exceed 45 Kg.
- Suitable Glass thickness 8mm / 10mm.
- Material :- S.S. - 304.
- Finish :- PSS / SSS

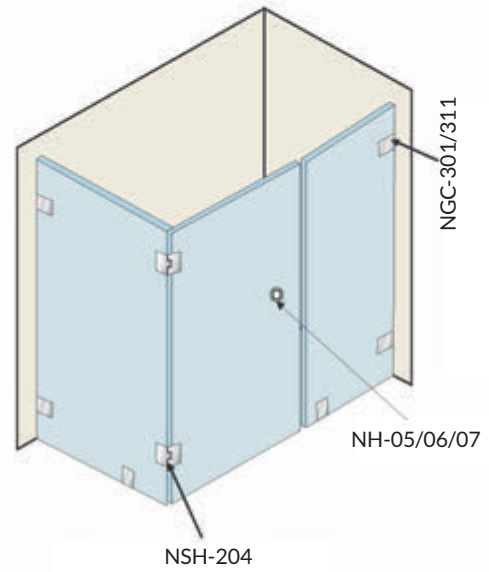
NSH - 207 Glass to Glass "T" Hinge

SHOWER FITTINGS

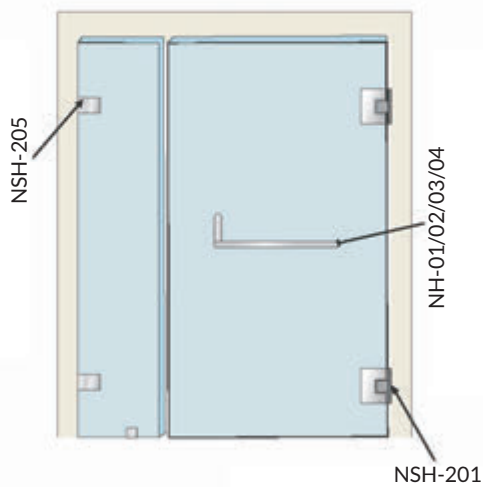
180° GLASS / GLASS LAYOUT



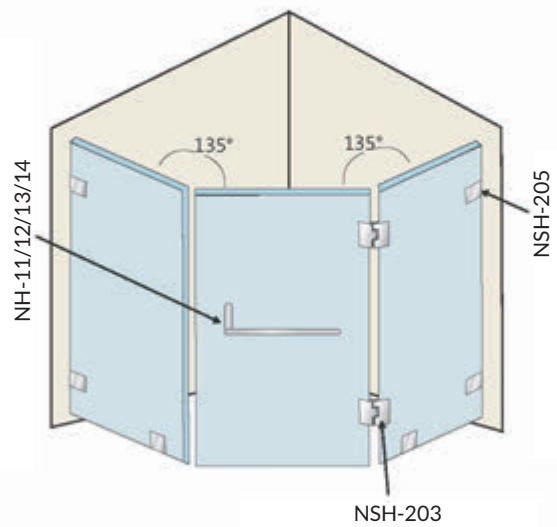
90° GLASS / GLASS LAYOUT



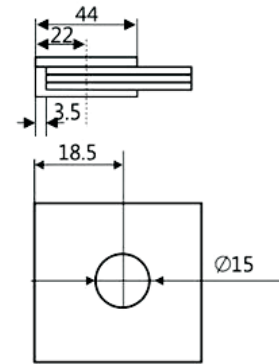
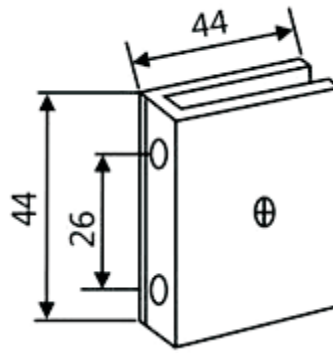
180° WALL / GLASS LAYOUT



135° GLASS / GLASS LAYOUT



SHOWER FITTINGS - GLASS CONNECTOR - CASTING - S.S. 304

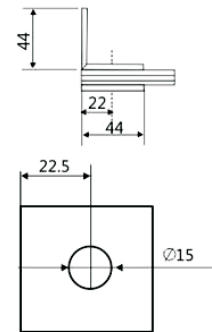
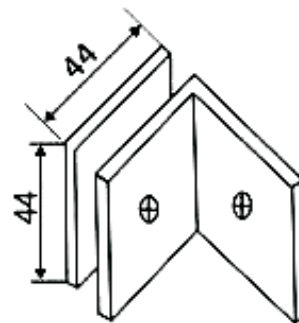


Glass Preparation

Features:

- Suitable Glass thickness 8mm / 10mm / 12mm.
- Material :- Casting SS - 304.
- Finish :- PSS/SSS

NGC - 301 Fix Connector

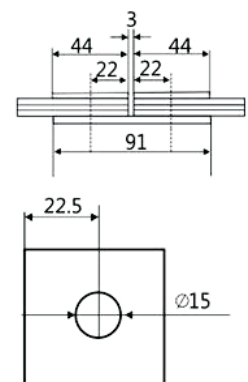
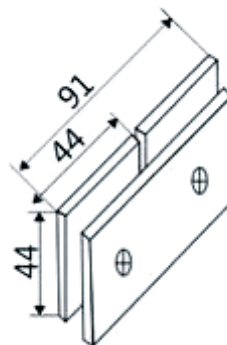


Glass Preparation

Features:

- Suitable Glass thickness 8mm / 10mm / 12mm.
- Material :-Casting SS - 304.
- Finish :- PSS/SSS

NGC - 302 Wall to Glass Connector - 90°



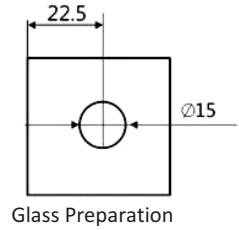
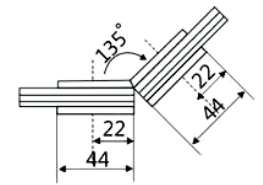
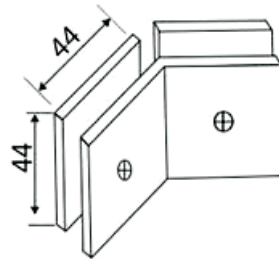
Glass Preparation

Features:

- Suitable Glass thickness 8mm / 10mm / 12mm.
- Material :- Casting SS - 304.
- Finish :- PSS/SSS

NGC - 303 Glass to Glass Connector - 180°

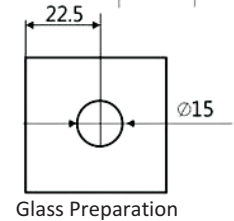
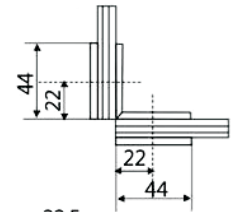
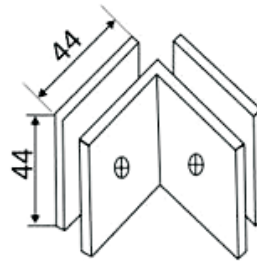
SHOWER FITTINGS - GLASS CONNECTOR - CASTING - S.S. 304



NGC - 304 Glass to Glass Connector - 135°

Features:

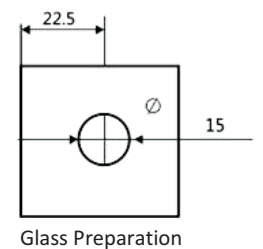
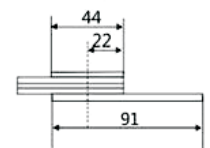
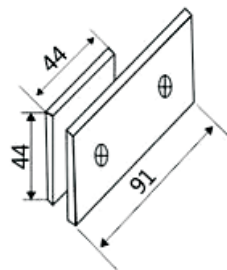
- Suitable Glass thickness 8mm / 10mm / 12mm.
- Material :- Casting SS - 304.
- Finish :- PSS/SSS



NGC - 305 Glass to Glass Connector - 90°

Features:

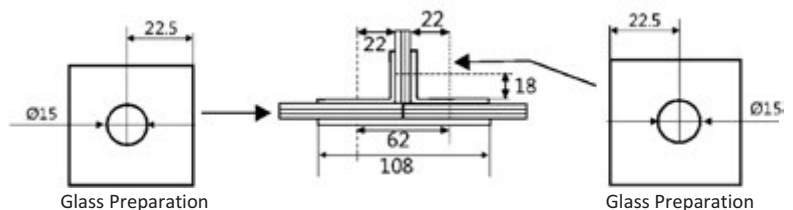
- Suitable Glass thickness 8mm / 10mm / 12mm.
- Material :- Casting SS - 304.
- Finish :- PSS/SSS



NGC - 306 Wall to Glass Connector - 180°

Features:

- Suitable Glass thickness 8mm / 10mm / 12mm.
- Material :- Casting S.S. - 304.
- Finish :- PSS / SSS

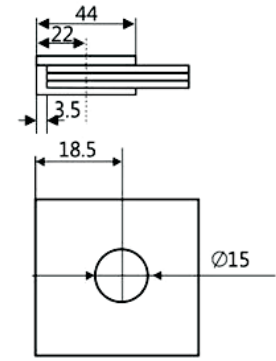
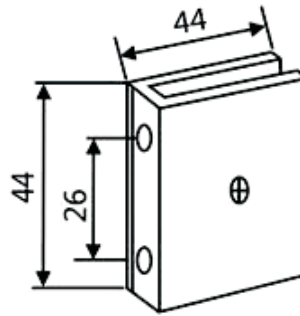


Features:

- Suitable Glass thickness 8mm / 10mm / 12mm.
- Material :- Casting S.S. - 304.
- Finish :- PSS/SSS

NGC - 307 Glass to Glass "T" Connector

SHOWER FITTINGS - GLASS CONNECTOR - SHEET METAL - S.S. 304

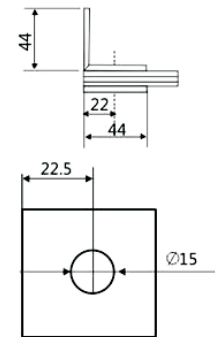
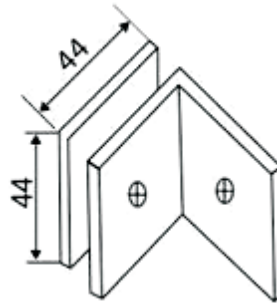


Glass Preparation

Features:

- Suitable Glass thickness 8mm / 10mm / 12mm.
- Material :- Sheet Metal SS - 304.
- Finish :- PSS/SSS

NGC - 311 Fix Connector

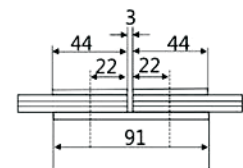
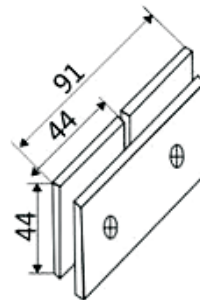


Glass Preparation

Features:

- Suitable Glass thickness 8mm / 10mm / 12mm.
- Material :- Sheet Metal SS - 304.
- Finish :- PSS/SSS

NGC - 312 Wall to Glass Connector - 90°



Glass Preparation

Features:

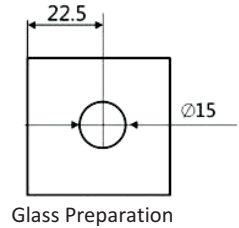
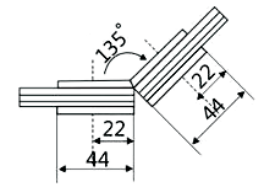
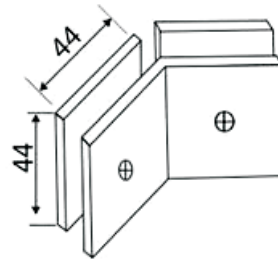
- Suitable Glass thickness 8mm / 10mm / 12mm.
- Material :- Sheet Metal SS - 304.
- Finish :- PSS/SSS

NGC - 313 Glass to Glass Connector - 180°

SHOWER FITTINGS - GLASS CONNECTOR - SHEET METAL - S.S. 304

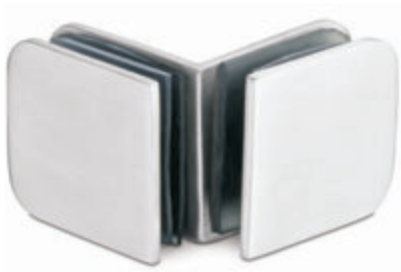


NGC - 314 Glass to Glass Connector - 135°

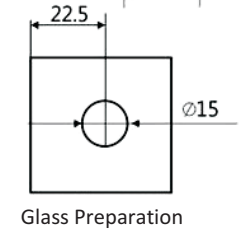
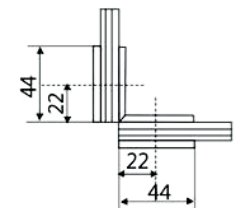
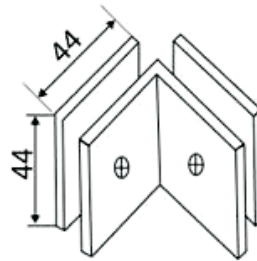


Features:

- Suitable Glass thickness 8mm / 10mm / 12mm.
- Material :- Sheet Metal SS - 304.
- Finish :- PSS/SSS



NGC - 315 Glass to Glass Connector - 90°

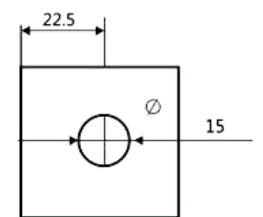
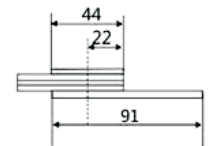
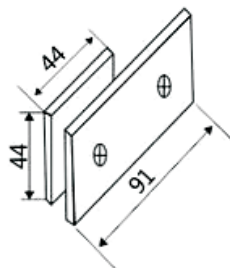


Features:

- Suitable Glass thickness 8mm / 10mm / 12mm.
- Material :- Sheet Metal SS - 304.
- Finish :- PSS/SSS



NGC - 316 Wall to Glass Connector - 180°

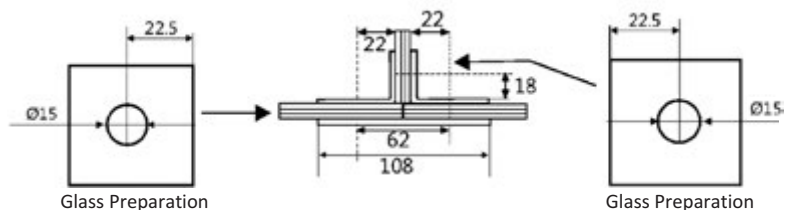


Features:

- Suitable Glass thickness 8mm / 10mm / 12mm.
- Material :- Sheet Metal SS - 304.
- Finish :- PSS/SSS



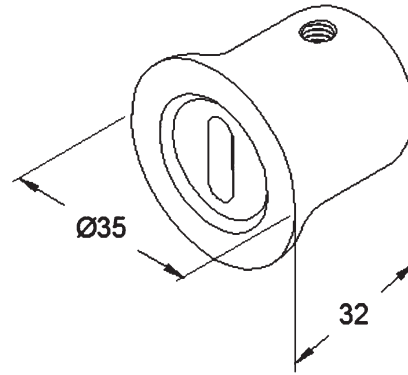
NGC - 317 Glass to Glass "T" Connector



Features:

- Suitable Glass thickness 8mm / 10mm / 12mm.
- Material :- Sheet Metal SS - 304.
- Finish :- PSS/SSS

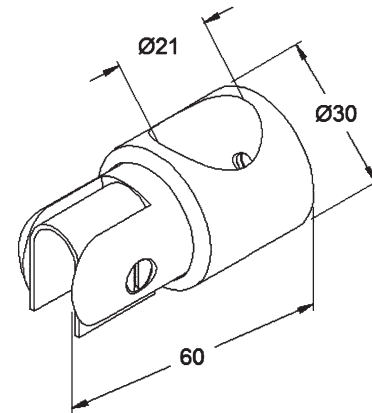
SHOWER FITTINGS - SHOWER HEADER - BRASS



Features:

- For 19mm Diameter Tube
- Material :- BRASS.
- Finish :- BN / CP

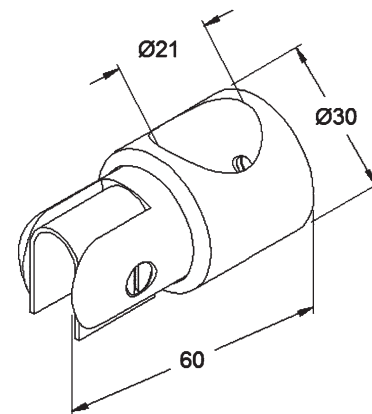
NSH - 401 Wall Socket



Features:

- For 19mm Diameter Tube
- Material :- BRASS.
- Finish :- BN / CP

NSH - 402 Rod to Glass Clamp

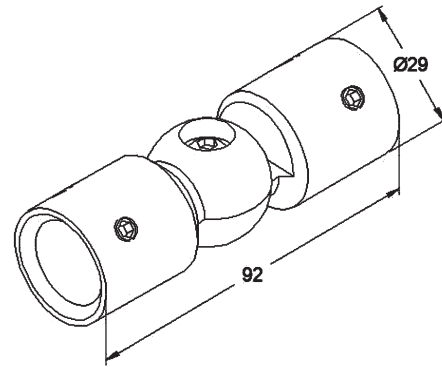


Features:

- For 19mm Diameter Tube
- Material :- BRASS.
- Finish :- BN / CP

NSH - 403 Rod to Glass End Clamp

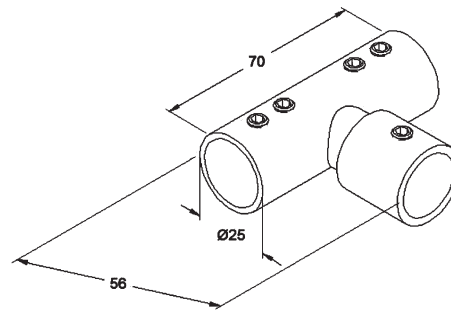
SHOWER FITTINGS - SHOWER HEADER - BRASS



Features:

- For 19mm Diameter Tube
- Adjustable at any angle.
- Material :- BRASS.
- Finish :- BN / CP

NSH - 404 Rod to Rod Connector



Features:

- For 19mm Diameter Tube
- Material :- BRASS
- Finish :- BN/CP

NSH - 405 Rod to Rod "T" Connector



Features:

- 19mm outer diameter pipe
- Available Length 2mtr.
- Stainless Steel Grade 304
- Finish: PSS / SSS

NSH - 406 Reinforcing Rod 19 mm Diameter Reinforcing Pipe

SHOWER FITTINGS - SHOWER HEADER - S.S. 304**Features:**

- Grub screws to hold the pipe
- Material :- S.S. - 304.
- Finish :- PSS / SSS

NSH - 411 Wall Socket for Rectangle Track**Features:**

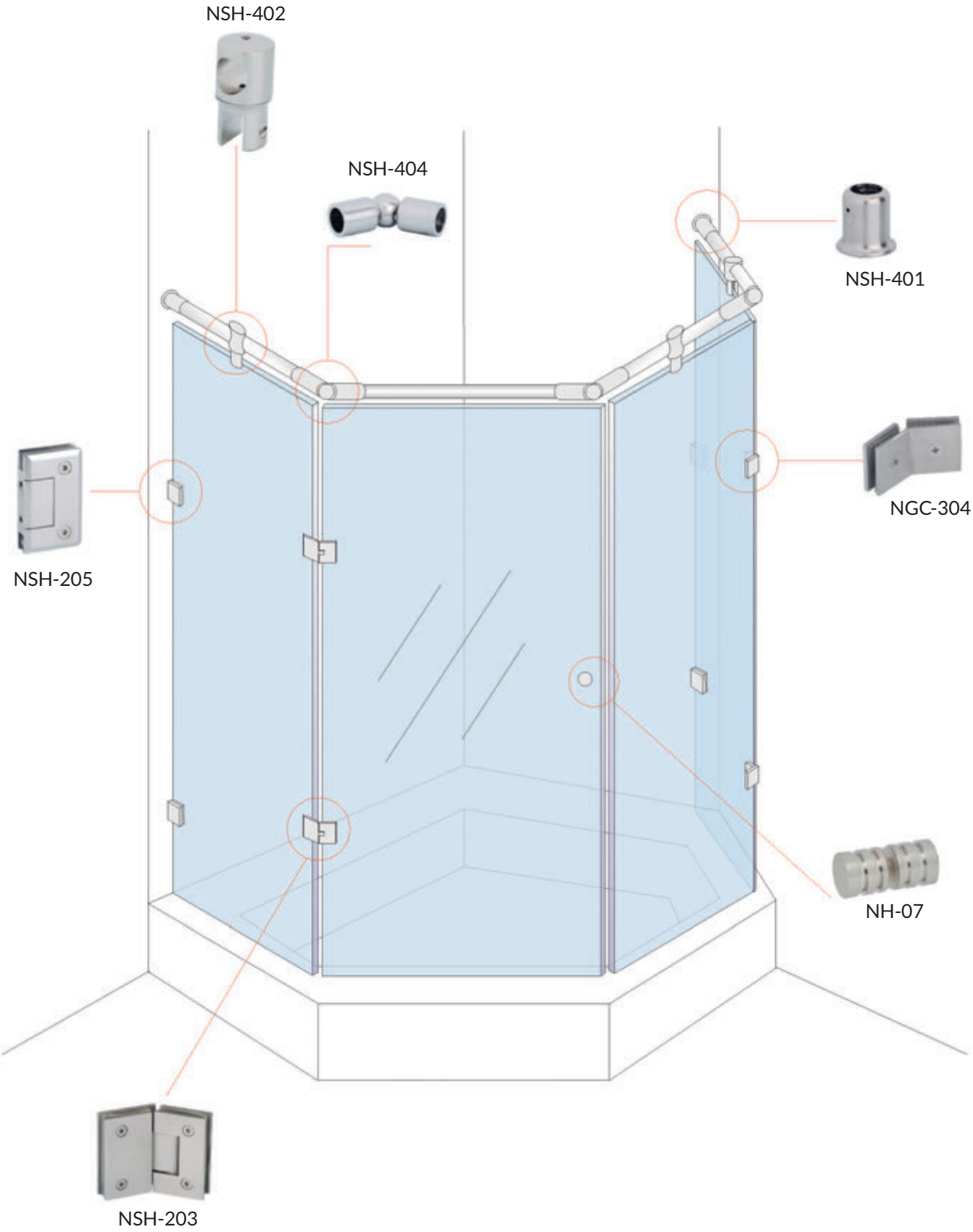
- Grub screws to hold the pipe & glass
- Material :- S.S. - 304.
- Finish :- PSS / SSS

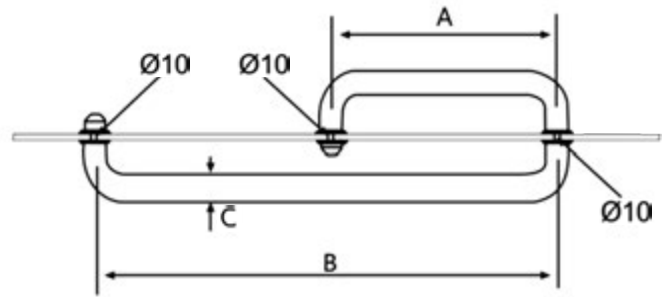
NSH - 412 Rod to Glass Clamp for Rectangle Track**Features:**

- Available length 2 mtrs.
- Material :- SS - 304.
- Finish :- PSS/SSS

NSH - 416 Reinforcing Rectangle Track

SHOWER FITTINGS



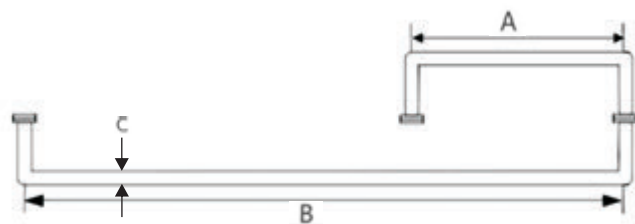


Product Code	Finish	Size		
		A	B	C
NH - 01	SSS / PSS	150mm	400mm	19mm
NH - 02	SSS / PSS	150mm	450mm	19mm
NH - 03	SSS / PSS	200mm	400mm	19mm
NH - 04	SSS / PSS	200mm	450mm	19mm

Features:

- Suitable Glass thickness 8mm / 10mm / 12mm.
- Material :- SS - 304.
- Finish :- PSS/SSS

NH - 01 / 02 / 03 / 04 Towel Bar with Handle - Round

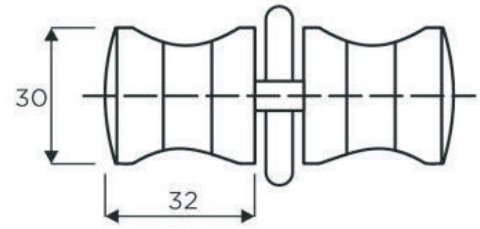


Product Code	Finish	Size		
		A	B	C
NH - 11	SSS / PSS	150mm	400mm	20mm
NH - 12	SSS / PSS	150mm	450mm	20mm
NH - 13	SSS / PSS	200mm	400mm	20mm
NH - 14	SSS / PSS	200mm	450mm	20mm

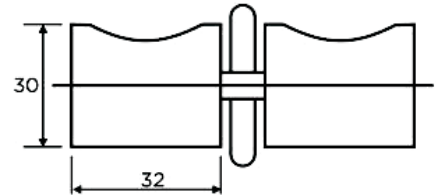
Features:

- Suitable Glass thickness 8mm / 10mm / 12mm.
- Material :- SS - 304.
- Finish :- PSS/SSS

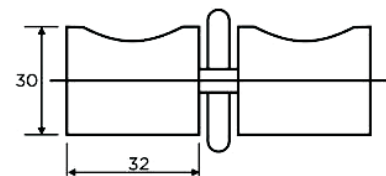
NH - 11 / 12 / 13 / 14 Towel Bar with Handle - Square

SHOWER FITTINGS - DOOR KNOB- S.S. 304**Features:**

- Material :- SS - 304.
- Finish :- PSS/SSS

NH - 05 Glass Door Knob**Features:**

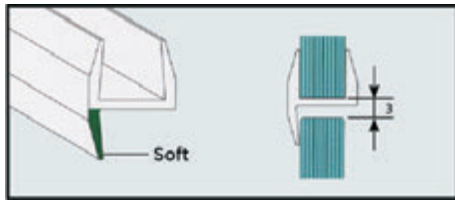
- Material :- SS - 304.
- Finish :- PSS/SSS

NH - 06 Glass Door Knob**Features:**

- Material :- SS - 304.
- Finish :- PSS/SSS

NH - 07 Glass Door Knob

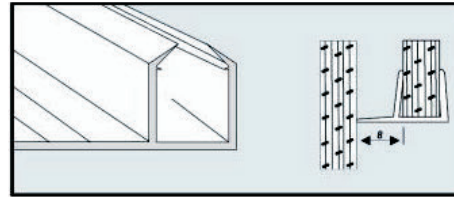
SHOWER FITTINGS - GLASS SEALING PROFILE - 2.2 MTRS.



NGP - 11 Central 180° Weather Seal (Soft)

Features:

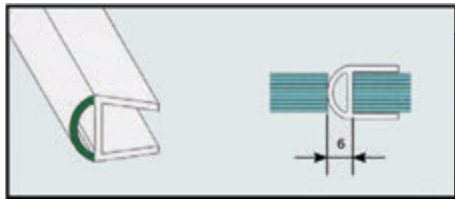
- Used between Fix Panel & Door Panel.
- Separate Product for 8, 10 and 12mm Glass.



NGP - 15 Offset Lip Seal

Features:

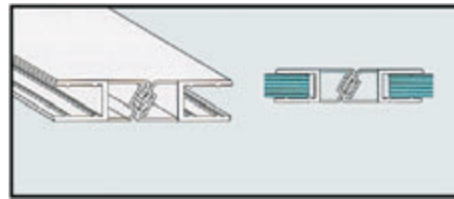
- Separate Product for 8, 10, and 12mm Glass.



NGP - 12 Central 180° Weather Seal

Features:

- Used between Fix Panel / Wall & Door Panel.
- Separate Product for 8, 10 and 12mm Glass.



NGP - 16 White Magnetic Seal for Glass to Glass 180°

Features:

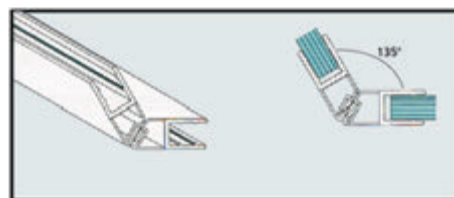
- Separate Product for 8, 10, and 12mm Glass.
- Supplied in Pairs.



NGP - 13 Wall Seal

Features:

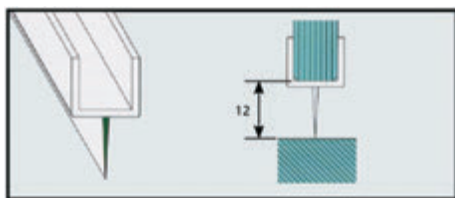
- Transparent with Soft Lip.
- Separate Product for 8, 10 and 12mm Glass.



NGP - 17 White Magnetic Seal for Glass to Glass 135°

Features:

- Separate Product for 8, 10, and 12mm Glass.
- Supplied in Pairs.



NGP - 14 Central Seal

Features:

- Transparent with Soft Lip.
- For Sealing Double Action Door and Wall.
- Separate Product for 8, 10 and 12mm Glass.



NGP - 18 White Magnetic Seal for Glass to Glass 90°

Features:

- Separate Product for 8, 10, and 12mm Glass.
- Supplied in Pairs.

Glass Architectural Hardware

The technical presentations and dimensions in the illustrations and drawings are non binding. We reserve the right to make changes to specifications at any time. We do not accept any responsibility for any errors which may occur in the production of this catalogue. All sizes in millimeter (mm).

The products in this list are the ones that are currently in the NSA product range. Since our product range is updated frequently, please feel free contact us if you cannot find any particular information.

The printed colours indicating the surface finishes are not 100% true, but do provide a useful guide.

Pictures may show designs which are different to the scope of delivery.



INNOVATION WITH INTEGRITY

Marketed by :

N. S. Enterprises

C-8, Room No. 4/5, Opp. Ram Mandir,
Bhadran Nagar, S. V. Road,
Malad (W), Mumbai - 400 064.

Tel. : +91 22 2807 6175

Email : ns_enterprise@yahoo.co.in

Website: <https://nsaenterprise.com> | <https://www.indiamart.com/n-senterprisesmumbai/>